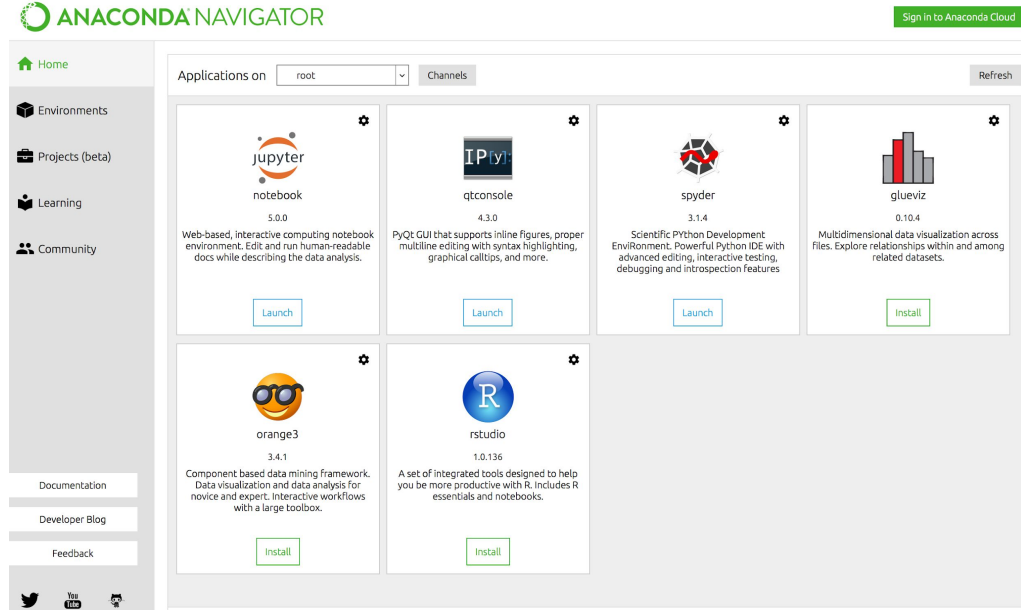


PyTorch Tutorial

Beibin Li

Python 3 and Anaconda

- Python: Created at 1991
- Python 1.0: released at 1994
- Lambda, Map, Reduce, etc
- Exception Handling
- Python 2.0: at 2000
- Garbage collection
- Unicode Support
- Python 3.0: at 2008
- Performance & Design Improvements
- Syntax is different, and not backwards compatible

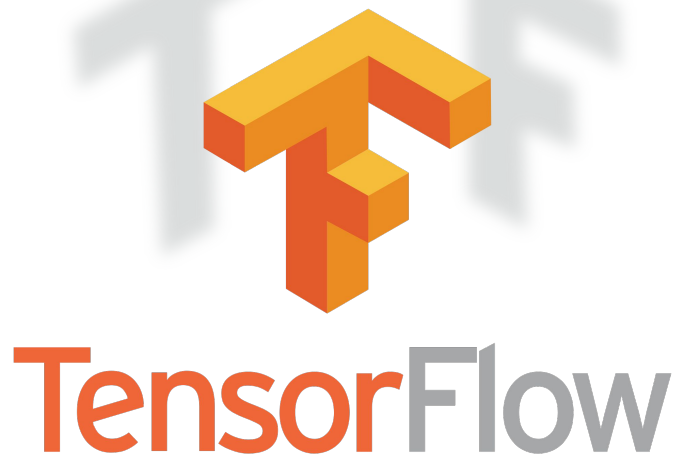
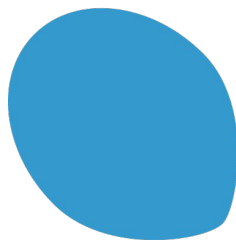


- (optional if you are already familiar with Python)
- Package management
- Environment control
- Nice IDE (Spyder) and debugger
- Jupyter Notebook
- and more...

Deep Learning Libraries



theano



PyTorch

- Dynamic Graph
- Easy and Flexible
- Popular
- Well maintained
- Compatible with Torch and Caffe
- more...

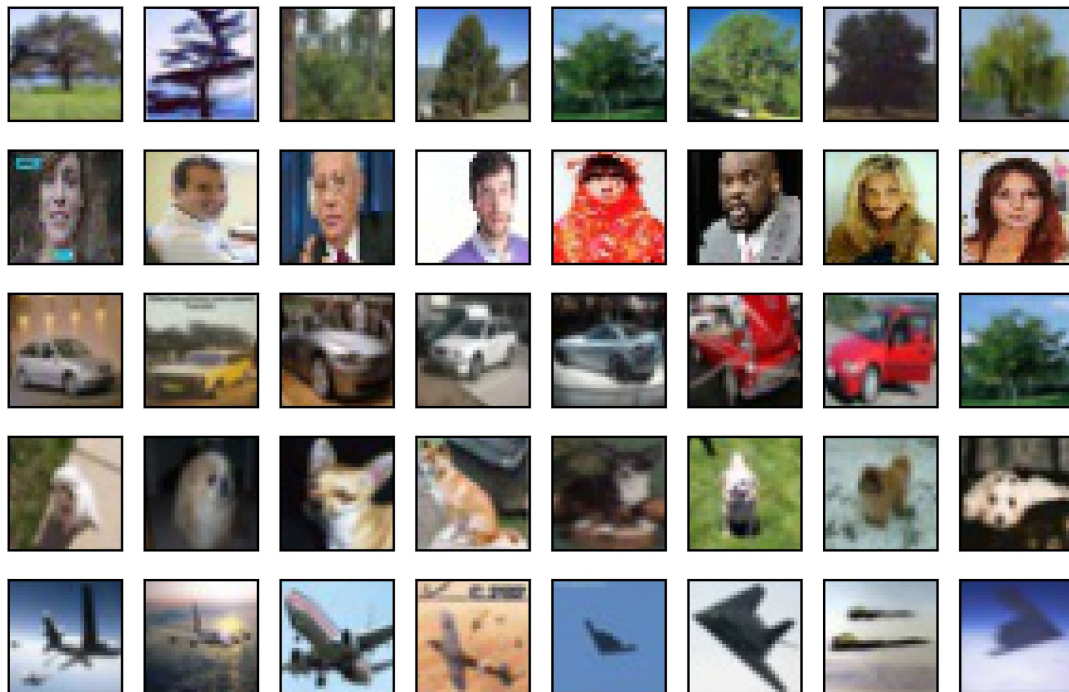
Which Object?

Image Classification:

- Tree
- Face
- Car
- Dog
- Plane

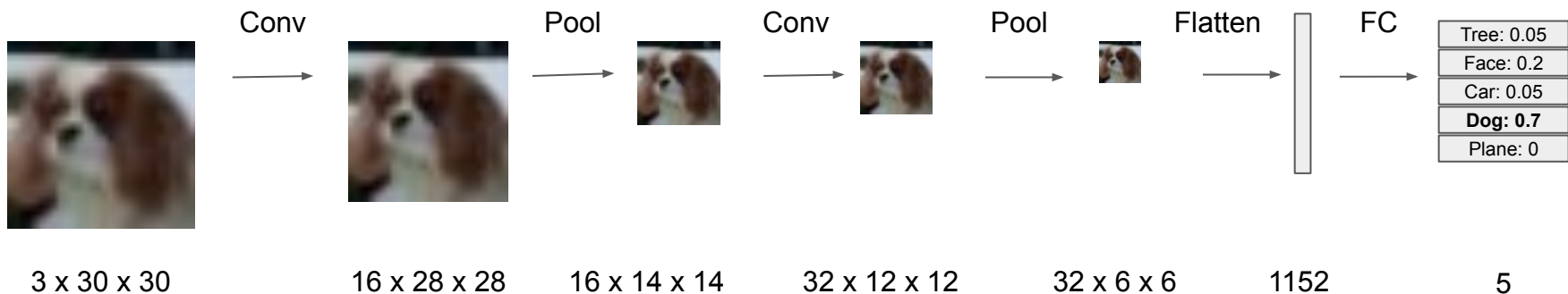
Training set: 90 images per cls

Testing set: 10 images per cls

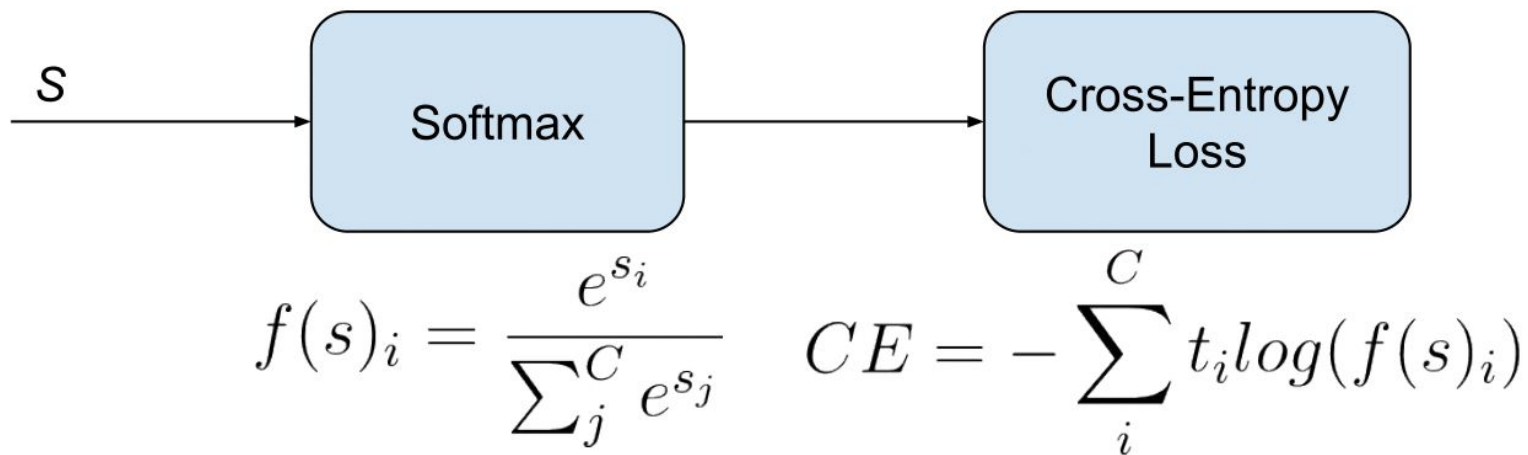


Suppose we use

- convolution with kernel size = 3, stride = 1
- Pooling with kernel size = 2, stride = 2



Cross Entropy Loss



Loss and Backpropagation

